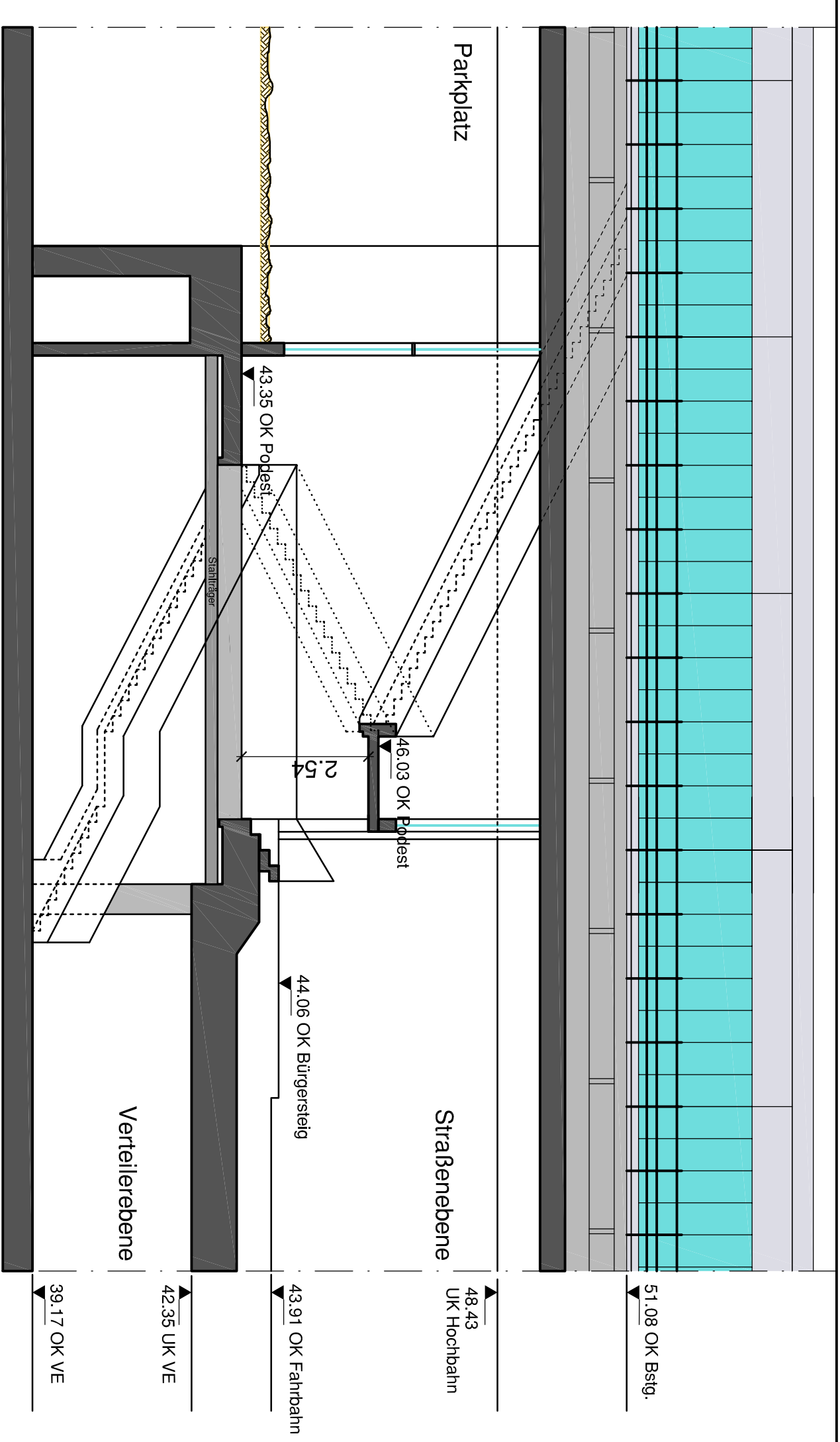
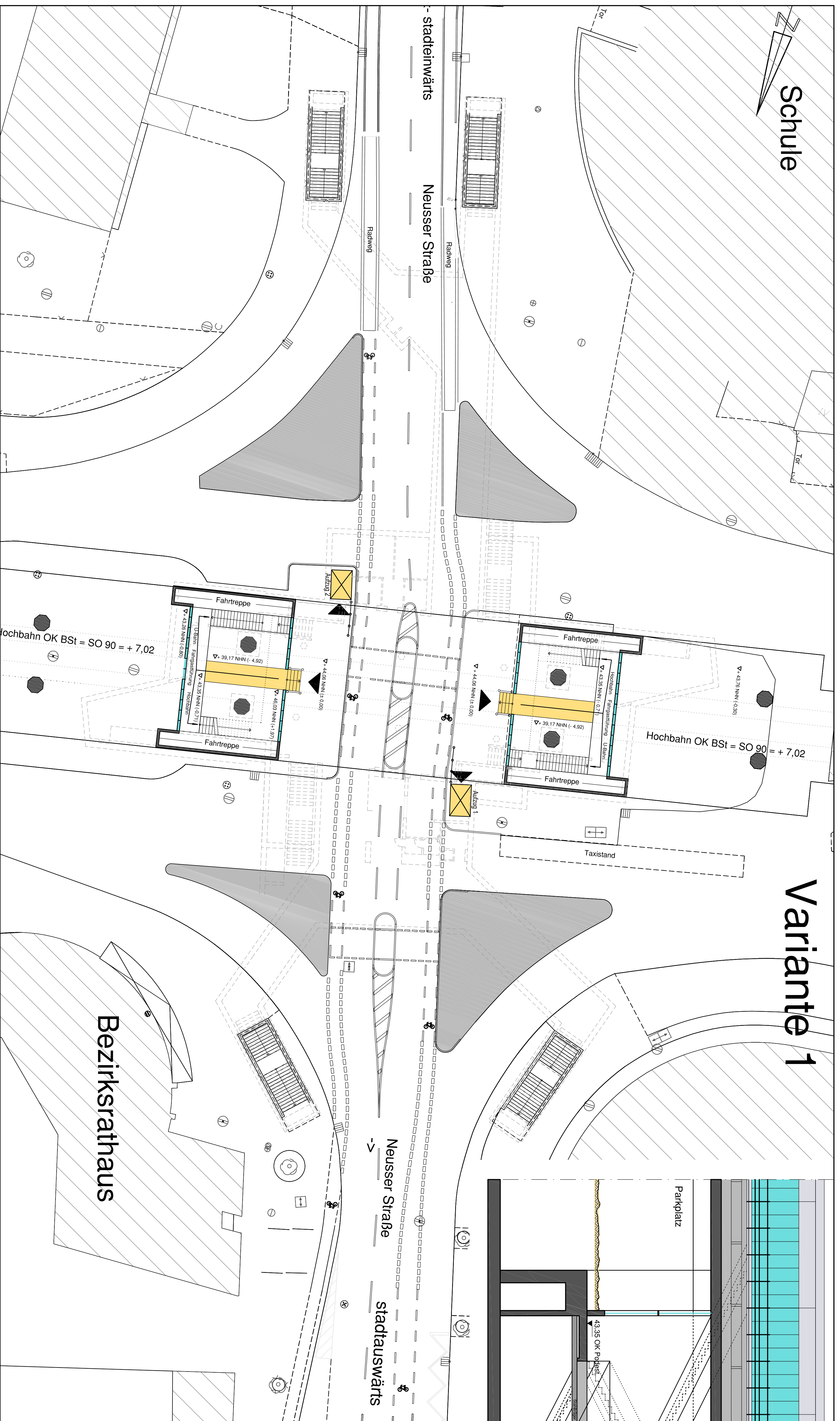
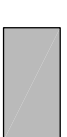


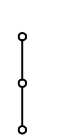



Schule


Variante 1

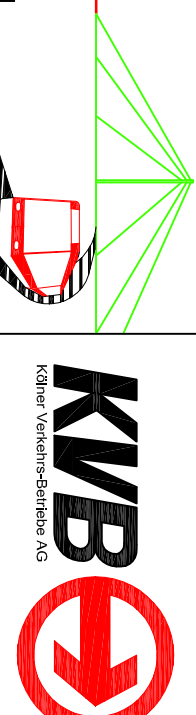


Legende

-  Gebäude
-  Schutzstreifen für Radfahrer
-  geplante Anlagen
-  Geländer
-  Fahrgastführung

| | | |
|--|------------------|----------------|
| Haltestelle Neusser Straße / Gürtel Zugang über Brücke Variante 1 -Vorzugsvariante- | | M.: 1:200 |
| | | 1:100 |
| 69 | 690 | KVB-AG |
| gez. Newelling | i.V. gez. Matzel | Bearr.: Meertz |
| 03.04.2009 | 03.04.2009 | Gez.: Heckel |
| | | 690/12 Meertz |
| | | Baulos |
| | | 43 |
| | | Nr.: A 2.22 |
| | | Ind. |


Stadt Köln
 Der Oberbürgermeister
 Amt für Brücken und Stadtbahnbau


KVB
 Köln Verkehrsverbund AG