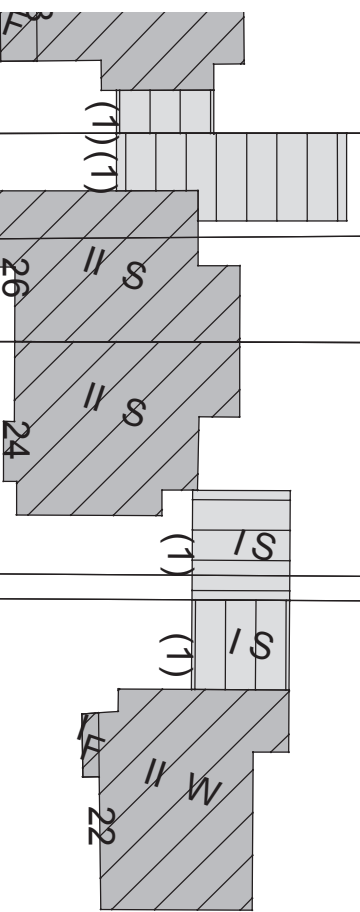


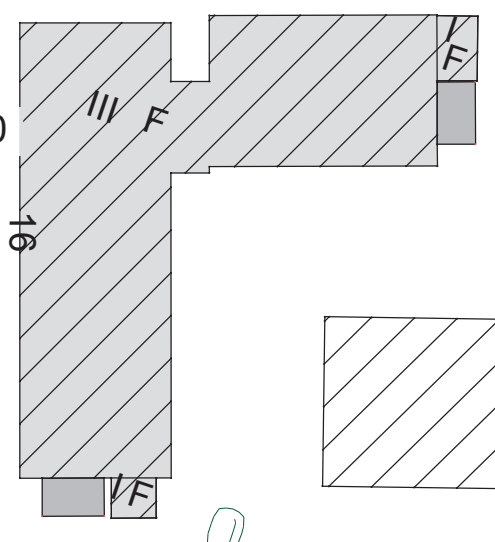
KEINE VERMESSUNGSTECHNISCHE GRUNDLAGE



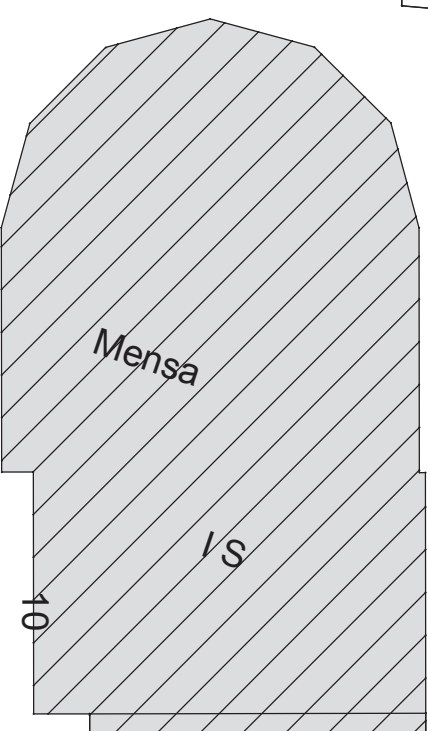
Pflaster 10/20/8 grau  
ebenerdig

9.00

Studentenweg



Studentenweg



Mensa

9.00

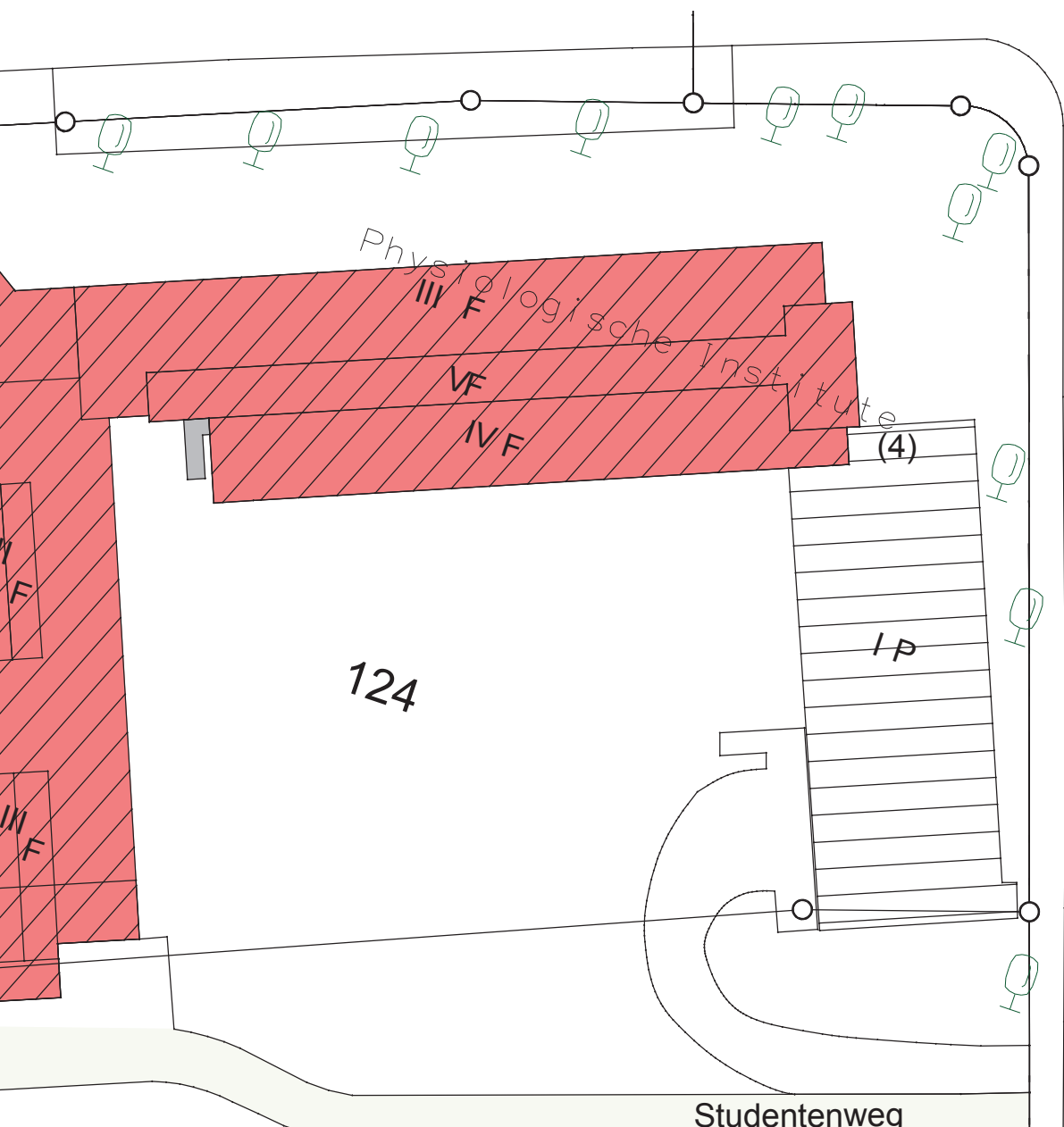
Robert-Koch-Strasse

2.50

3.00

7.45

2.00

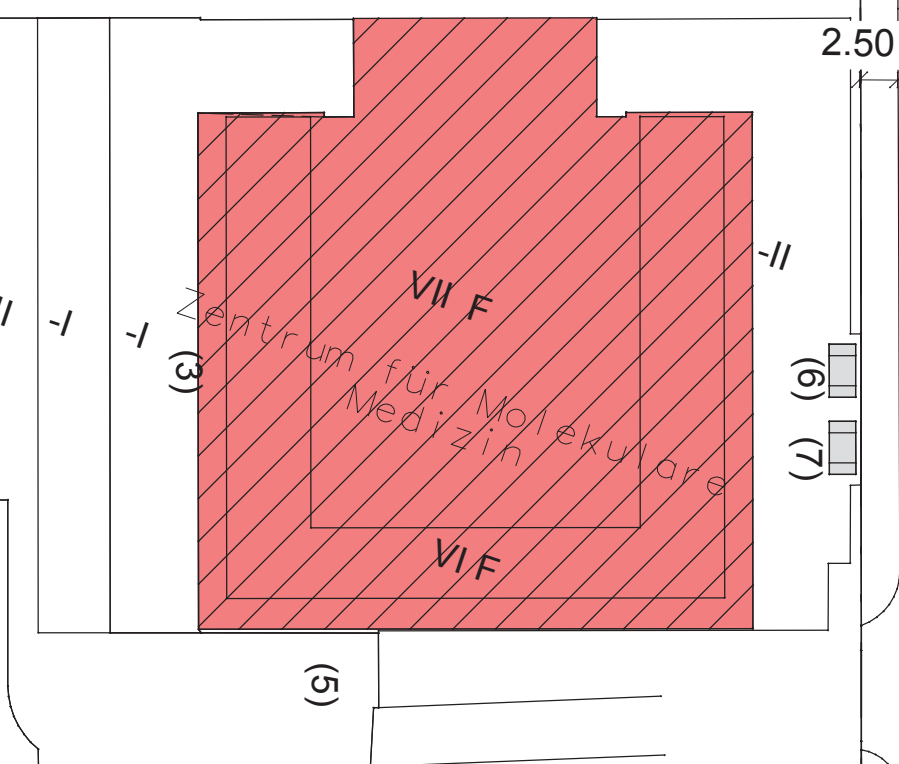


Physiologische Institute

124

IP

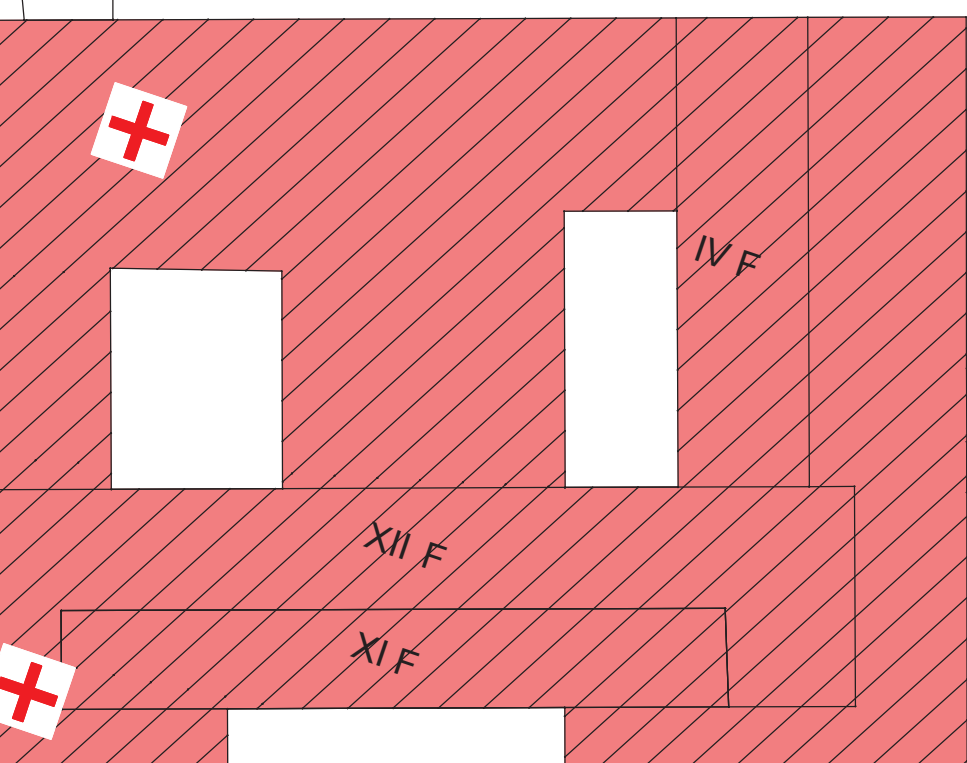
Studentenweg



Zentrum für Molekulare  
Medizin

(5)

(6) (7)



IV F

XII F

XI F

ANLAGE 1